

WHAT IS PET/CT?

PET/CT is the fusion of two sophisticated imaging modalities—positron emission tomography (PET) and computed tomography (CT). In a single exam, PET/CT shows both metabolic function and anatomical detail. This integration provides more accurate information for diagnosing the presence and extent of disease, prescribing treatment and tracking therapy progress.

In the fight against cancer, PET/CT is one of the most powerful diagnostic tools available. Its imaging capabilities make it possible to tell if there is cancer present, where it is, whether it has spread and what stage it is at—all in one scan. Imaging results help clinicians determine the optimal course of treatment and, subsequently, the ongoing effectiveness of that therapy.

PET/CT is also providing important diagnostic information on heart disease and neurological disorders, such as Alzheimer's disease.

When you come to WIS for a PET/CT exam, be assured that our skilled and compassionate staff and technologists will be dedicated to your care, comfort and safety.

HOW TO FIND US

WIS in Bellevue

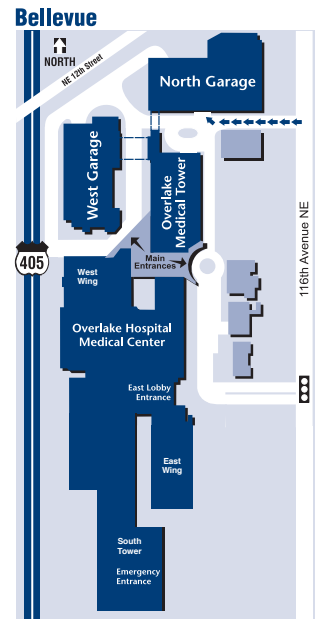
Overlake Medical Tower
1135 116th Ave. N.E.
Suite 260
Bellevue, WA 98004
425.688.0100

Southbound

Exit I-405 at N.E. 8th St., eastbound. Merge to the left lane and turn left (north) at the first stoplight onto 116th Ave. N.E. Turn left into the Overlake Hospital campus. Park in the North Garage and proceed to the Overlake Medical Tower.

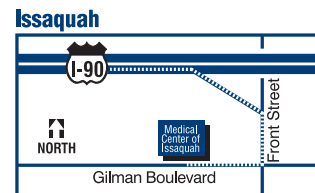
Northbound

Exit I-405 at N.E. 4th St.
Turn right on N.E. 4th St. and turn left on 116th Ave. Turn left into the Overlake Hospital campus. Park in the North Garage and proceed to the Overlake Medical Tower.



WIS in Issaquah

Medical Center of Issaquah
450 N.W. Gilman Blvd.
Suite 105
Issaquah, WA 98027
425.688.0100



Eastbound

Take the I-90 exit #17 and merge south onto Front St. Turn right on Gilman Blvd. Turn right into the Medical Center.

Westbound

Take the I-90 exit #17. Turn left onto Front St. Turn right on Gilman Blvd. Turn right into the Medical Center.



www.washingtonimaging.com

PET/CT

IT STARTS WITH A QUESTION

Because your doctor needs more information about your condition to guide your care, you have been referred to Washington Imaging Services for a diagnostic exam.

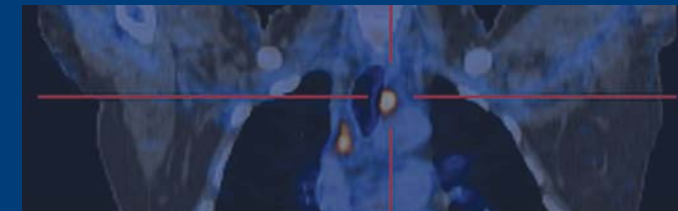
You are in good hands.

We make your comfort and safety the focus of our concern. As specialists in the latest imaging technologies, we quickly and effectively capture the detailed anatomical images needed for accurate diagnosis and treatment.

Then, one of thirteen board certified radiologists with subspecialty training will interpret your exam and promptly report the results—giving you and your doctor a clearer, more accurate picture of your health.



POSITRON EMISSION TOMOGRAPHY/ COMPUTERIZED TOMOGRAPHY



IMAGING FOR ANSWERS

THE NEED TO KNOW MORE

We understand that diagnostic tests and the reasons for having them may make you feel anxious. This brochure will help answer some of the most frequently asked questions about having a PET/CT scan.

If you need additional help or information, please call at **425.688.0100**.

You will also find detailed information on our website at www.washingtonimaging.com.



WASHINGTON IMAGING SERVICES, LLC



A powerful diagnostic tool, PET/CT helps detect diseases before anatomical changes or medical symptoms occur.

How should I prepare for my PET/CT scan?

Please read these preparation instructions carefully as following them is critical to your imaging study.

- Follow a high protein diet with no carbohydrates for at least 24 hours prior to beginning your PET/CT exam preparation. A staff member will call you with more instructions on the exact diet.
- If you've had an allergic reaction to a contrast agent in any prior imaging exam, please notify our staff before your appointment.
- DO NOT do any strenuous activities, heavy lifting or exercise 24 hours prior to the PET/CT scan. Excessive muscle activity may interfere with the interpretation of your study.
- DO NOT eat or drink anything except water for at least 12 hours prior to the exam as test results are affected by your blood sugar. Also, do not chew gum.
- Continue to take prescribed medications (with water) on the day of your scan, unless instructed otherwise by your physician. However, do not take vitamins on your exam day.
- Be well hydrated. Drink plenty of water the day before and the day of your exam.
- If you are a diabetic, please notify our staff to obtain special instructions.
- If you take insulin to control your diabetes, you will be scheduled for an early morning appointment since you must withhold taking your insulin prior to the exam.
- Patients weighing over 400 pounds, or females who are pregnant or breast feeding cannot be scanned.

How is the exam performed?

A technologist will start an IV in your arm for an injection of a small amount of radioactive glucose called FDG. You will rest in a quiet area for 45-60 minutes as the FDG circulates throughout your body. After emptying your bladder, you will be helped onto the scanner bed. The table will move slowly through the donut-shaped PET/CT scanner. As images are being acquired, you will need to lie still and breathe normally. The actual scan takes about 20-40 minutes and is completely painless.

What should I wear?

Wear warm, comfortable clothing free of metal hooks, buttons or zippers. All jewelry, hair pins and clips must be removed prior to the exam. Please leave your valuables at home.

When should I arrive and how long will the exam take?

Please arrive 15 minutes before your appointment time to register. Be sure to bring your insurance information. Completing the patient forms in advance (found on our website) will save time.

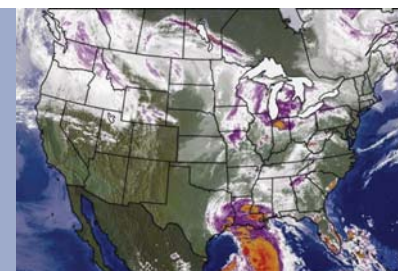
Plan on spending a total of 2-3 hours at WIS for the procedure. This includes time to register, start an IV, inject the FDG and 45-60 minutes rest before the actual imaging which takes approximately 20-40 minutes. The scan may be longer if your doctor has ordered one or more contrast CT scans to accompany your PET/CT scan.

Will my insurance cover a PET/CT scan?

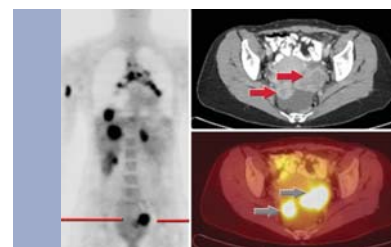
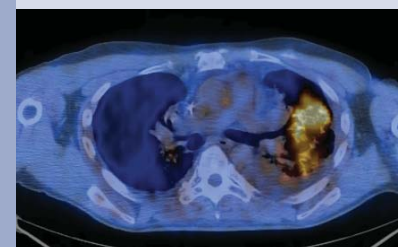
Most PET/CT exams are covered. A referral coordinator from WIS will work with your referring physician to complete the required pre-authorization process. If your exam has been scheduled and you must cancel the appointment, please notify us at least 24 hours in advance to avoid being charged for the prepared FDG dose.

When will my results be available?

A board certified radiologists will interpret your PET/CT and send your referring physician a written report and pictures detailing the findings of your exam within 24 hours. Since the imaging study done at WIS may be only one tool in your clinician's work up, additional time may be needed to correlate all of the associated reports and data before you are notified. Please wait for your clinician's office to contact you about the scan results.



Think of PET/CT as a weather map of the body that pinpoints where unusual activity is taking place. PET detects changes in metabolic function. CT gives detailed anatomical views. Combined, they indicate the presence, location and extent of disease.



A powerful tool in the fight against breast cancer, PET/CT aids in detection, staging and treatment.

Save Time—Complete Your Patient Forms in Advance

For your convenience, the required patient forms are available on our website at www.washingtonimaging.com. Under the Scheduling Information tab, click on Patient Forms. Print out and complete the Patient Registration and History forms and bring them with you to your appointment.

You have an appointment scheduled for:

Date: _____

Time: _____ AM _____ PM

- Location:
- Bellevue Suite 260**
1135 116th Ave. N.E.
Bellevue, WA
 - Issaquah Suite 105**
450 N.W. Gilman Blvd.
Issaquah, WA

Please arrive 15 minutes prior to your exam to register.

Professional radiology interpretations are provided by Overlake Imaging Associates, P.C., a separate entity. Cover photo of radiologist Daniel Smoots, MD.

Find out more about PET/CT by visiting our website at www.washingtonimaging.com.